

## 7. Student admission, progression and welfare

### 7.1. Factual information

#### 7.1.1. Description of how the educational programme proposed by the Establishment is advertised to prospective students

Educational programs can be communicated to stakeholders by means of different communication channels. The [Spanish Ministry of Science, Innovation and Universities](#) (formerly the Ministry of Education) has centralized all the information regarding educational programs in Spain: this correspond to the Official Register for Universities, Establishments and Degrees (called RUCT in Spanish). The information is published and accessible for everyone on their website ([link](#)). The degree *curriculum* is also published on the ULPGC website ([link](#)) and on the Faculty website ([link](#)).

The information catalogue published on the Faculty Website is described in the QA system: the Procedure for Public Information ([PCC08](#)). The QA Committee approves the information that should be published every year ([see document](#) for the year 2017-2018), and the Vice-Dean of Quality Assurance is responsible for the revision of the Website and its update.



In order to promote the Veterinary Profession and our educational programme, the ULPGC has designed several activities. The most important of these is the 'ULPGC Open-Doors Day', which takes place in March ([link to the 2018 Open-Doors Day](#)) and is aimed at students from the first and second years of Baccalaureate (16-18 years of age). Different sessions are scheduled at High Schools by the University for the promotion of different study programmes ([see link to 2018 activities](#)). In addition, the ULPGC has published several documents for the promotion of the University as a whole ([Student Guide 2018-2019](#)) and the Veterinary Medicine *Curriculum* ([Veterinary Leaflet](#)).

Talks are also given by the members of the Faculty Governing Body and academic Staff at both state-run and private high schools during which the Veterinary profession and the degree program is presented.

#### 7.1.2. Description of the admission procedures for standard students:

The Spanish Education System comprises the following stages: *Primary Education* (compulsory, lasting six years, and usually from 6-12 years of age); and *Secondary Education* (compulsory, lasting four years, and usually from 12-16 years of age). After that, students choose between the *Baccalaureate* (an academic qualification) which is non-compulsory and with a duration of two years; or *Professional Training* (a vocational qualification), which is also non-compulsory and with a duration of two years.

The admission requirements for beginning university studies are established by the Ministry of Education and Science of the Spanish Government and the Education Department of the Government of the Canary Islands. The Spanish law that regulates the limits in admission numbers for different academic areas and groups was approved in 2008 ([RD 1892/2008](#)) and later modified by the [RD 412/2014](#). For more information about the specific numbers limits approved by the ULPGC, a brief description is commented below in the text. Also, the reader can find detailed information published on the ULPGC website ([link](#) only in Spanish).

All the information regarding the admission to all study programs in the ULPGC is communicated to stakeholders on the Website <http://www.ulpgcparati.es/>. The admission procedure is also a QAS Institutional Procedure ([PI10](#)) which is not managed directly by the Faculty of Veterinary Medicine Administration.

The Veterinary Degree has *numerus clausus* (a limit of 72 places) distributed in the following groups:

**Standard Students.** To be admitted to the university studies at the ULPGC, students, having completed the Baccalaureate or Professional Training courses, must pass the University Access Test (called 'EBAU', the Spanish acronym for Baccalaureate Evaluation for Accessing the University, formerly known as the 'PAU'). The EBAU is a simultaneous national evaluation procedure which takes place over two days and is organised by the Spanish Autonomous Communities ([Link to EBAU in Canary Islands](#)) and with the participation of the universities ([link to EBAU in the ULPGC](#)).

The range of the subject's examination results is from 0 to 10, with 5 as the minimum mark to pass. The results of two subjects can be multiplied by 0,2 for a better discrimination of the student profile. For Health Sciences (Veterinary Medicine, Medicine, Pharmacy, Nursing, Physiotherapy, etc.) the subjects 'Chemistry' and 'Biology' have been selected as Specific Competences Exams. Therefore, the maximum admission grade is 14.

Students' admission grades are calculated using a weighing system: 60% is taken from their Baccalaureate/Professional Training average grade and 40 % from the results of the EBAU evaluation procedure. Therefore, the final grade is calculated according to the following formula:

$$\text{Admission grade} = 0.6 * \text{NMB} + 0.4 * \text{CFG} + a * \text{M1} + b * \text{M2}$$

Where NMB = the average grade corresponding to the 1st and 2nd years of the Spanish Baccalaureate; CFG = EBAU general phase grade; M1, M2 = the two best grades in the subjects of the EBAU specific phase; a, b = weighting coefficients of the subjects of the specific phase.

For overseas students and from the EU without reciprocal agreements on access and admission to universities in Spain, consult more detailed information in the following website ([link](#)).

In order to comply with the Royal Decree 412/2014, from June 6, which establishes the basic regulations for the admission procedures for the official university degree programs in Spain, the ULPGC has defined a quota for each of the following groups:

- Disabled students (5%)
- Students competing at high level in sporting competition (5%), mandatory according to *Royal Decree 971/2007, from July 13, in relation to high level and performance sports students or athletes.*
- Graduates (2%) ([link](#) for more information)
- Students over 25 years old (3%) ([link](#) for more information)
- Students over 40 years old (3%) ([link](#) for more information)

For these last two groups, there is a specific University Access Test which has been designed by the Vice-rectorate of Students and Sports.

Although the drop-out rate is very low, every July a procedure which is called '*File Transfer*' is initiated. Veterinary Medicine students from other universities (both Spanish and overseas), or from other Health Science Degrees in second place, can apply for the vacancies in the different academic years (there are usually 3-5 vacancies per academic year). Only the best students are admitted based on their academic records.

## -) selection criteria

As mentioned previously, none of the Faculties or Schools participate in this procedure. The student can apply for different degree programmes according to their interests; however, they must select an order of priority. As such, standard students are selected by using their admission grades by means of an centralized electronic system managed by the ULPGC Student Service.

There is no additional admission test for the Faculty of Veterinary Medicine.

The number of applicants (as first and second choices) for the degree in Veterinary Medicine in the last few years has been high: 583 (2012-13); 756 (2013-14); 825 (2014-15); 674 (2015-16); 661 (2016-17); 445 (2017-2018) and 547 (2018-2019). This is particularly notable if we take into account the total number of applicants which were: 1,168 (2012-13); 1,301 (2013-14); 1,364 (2014-15); 1,143 (2015-16); 1,081 (2016-17); 866 (2017-2018) and 1,045 (2018-2019).

The Faculty records the grades of the last admitted student (the lowest access grade) which is called the 'cut-off grade' (out of 14). The data are the following: 9,421 (12-13), 9,953 (13-14), 10,643 (14-15), 10,890 (15-16), 11,076 (16-17), 10,704 (17-18), 10,670 (18-19). Therefore, the best students are usually selected.

### **-) policy for disables and infirm students**

Both flexibilization and different methodological measures are contemplated in the law ([Order ECD/42/2018](#)) for the evaluation procedures for foreign languages for those students with disabilities, especially for students with hearing disabilities, or students with difficulties in their oral expression and/or speech disorders. These adaptations are never used to reduce the grades which have been obtained. Also, the Resolution of the Canary Islands Government for the EBAU ([link to the Resolution](#)) includes students who have an officially recognized disability equal to, or greater than 33 per cent, whether or not they require adaptation, are taken into account.

After their admission, the ULPGC has a Support Service for [Social Action and Psychosocial Attention](#) whose aim is to assist those students who requires specialized attention due to their social and/or personal situations. Various action programs are offered:

**Support for Students with Disabilities**, which provides the necessary conditions for the full integration and normalization of people with disabilities at the University of Las Palmas de Gran Canaria.

**Volunteering and Solidarity**, which is responsible for providing information, training and orientation programs for volunteers, as well as organising solidarity projects within the scope of the ULPGC. For this end, it has a Solidarity Agenda.

**Psychosocial support**, with the implementation of a Psychosocial Activities Agenda, which offers guidelines, courses and related workshops, which are aimed at preventing behaviour and risk situations that might endanger students' personal motivation, along with the creation of a Psycho-Pedagogical Support Office, which provides an individual or group service for those students who needs to develop self-learning strategies that are appropriate for the demands of their academic studies, and for those students that needs to improve their intellectual, academic or personal strategies in order to enhance their academic performance.

Since the academic year 2017/2018, the ULPGC has mobile application for mobile in which students with unusual or unexpected circumstances can receive attention from the Vice-rectorate of Students and Sports. This mobile application, called '[Estu ULPGC](#)', is available for [Android](#) and [IOS](#), and addresses cases such as harassment, illness, serious family situations,

marginalization, lack of financial resources or personal situations in which students require special attention. This application is not used for administrative procedures that must follow the procedure stipulated by current legislation.

#### **-) composition and training of the selection committees**

There is no specific selection committee for student admission, since the process is based on the grade obtained in the official University Access Exam.

#### **-) appeal process**

Students may request revision by a tribunal of grades obtained in one or more of the tests that make up the EBAU. The submission deadline for these applications is three working days, counting from the date of publication of the marks.

Those students requesting a revision of the grades, must choose only one of the following types of revision for each subject, since they are mutually exclusive:

a) Simple revision: those tests subject to a simple revision will be reviewed in order to verify that all aspects have been evaluated with the correct application of the general evaluation criteria and specific correction criteria, as well as verifying that there are no material errors in the process of calculating the final grade. This revision may will never lower the initial grade of the student.

b) Double correction: the tests for which the request for double correction has been submitted will be marked by a professor or a teacher from the specialist tribunal for the subject, different from the one who did the first correction. In the event that there is a difference of less than two points between the two grades, the final grade will be the arithmetical average of the grades obtained in the two corrections.

In the event that there is a difference of two or more points between the two grades, a third correction will be done *ex officio*, and the final grade will be the arithmetical average of the three grades. In this type of appeal, the final grade can be less, equal to, or higher than the initial one.

Both types of review of qualifications must be carried out within a maximum of five working days from the date of the end of the period for requesting a review of qualifications.

Also, students who have requested double correction in a subject will have the right to see the corrected exam after the second correction within ten days from the day of publication of the second correction, upon special request within the establish deadline.

#### **-) advertisement of the criteria and transparency of the procedures**

The Department of Education of the Canary Island Government constitutes an Organizing Committee for the EBAU (called, COEBAU). This committee is planning and organization body of this evaluation procedure. In relation to the exams, the COEBAU must establish the protocols for the preparation of the proposed exercises, which should include the weighting of each of the items in the correction of the exercise, accompanied by the general and specific criteria for correction and grading. This information must be published before the beginning of the official period for requesting the revisions.

#### **7.1.3. Description of the admission procedures for full fee students**

Not applicable.

#### **7.1.4. Description of how the Establishment adapts the number of admitted students to the available educational resources and the biosecurity and welfare requirements**

The number of students admitted per year is strictly limited to 72. This maximum number of new-admission students must comply with that established in the official document of the ULPGC Veterinary Degree approved by the ANECA (a member of ENQA).

The total number of admissions is mainly based on the teaching capacity required to achieve a satisfactory standard, based on the available facilities and staff. The demand for Veterinary graduates in the labour market is also considered.

#### **7.1.5. Description of:**

##### **-) the progression criteria and procedures for all students;**

A new ULPGC regulation ([link](#)) devoted to the academic progression and permanence of degree students has been approved (dated 2012, 26 November, and later partially modified 2014, 28 July). This regulation is made by the Social Council and is mandatory for the ULPGC. The main changes are the following:

- In the first year, the students must enrol in 60 ECTS and must complete a minimum of 18 ECTS; otherwise the student has the opportunity of asking for an additional extension, a '*prórroga adicional*', but only once during their degree.
- From the second year and during the following years, students must complete at least 50% of the credits from those that they have been enrolled in that year; otherwise, the student only has the opportunity of asking one additional extension, a '*prórroga adicional*'; but only once during their degree.
- There is a limit of 6 official examination sessions (for official final examinations) per subject, with a maximum of two opportunities per academic year. If the student fails in the 7<sup>th</sup> session; they will be expelled (this has only occurred once until now).
- If the students do not sit for an examination session in one subject, this is not considered as an examining session that has been used up if the Academic Success Rate of this subject is less than 30 percent of the average of the rate for the overall degree (Academic Success Rate = passes/number of candidates).
- a limit in academic progress has been introduced within the curriculum; it is first obligatory to enrol in all the previously failed subjects, so it is necessary to complete the previous subjects in order to be able to progress further in the *curriculum*. This was a recommendation in the EAEVE previous report (2009).
- Also, there is a limit in subject enrolment based on the student workload. The maximum is 60 ECTS (for full-time students) or 24-36 ECTS (for partial-time students). However, it is possible to exceed these limits if the student had good academic results in the previous academic year; this corresponds to a maximum of 78 ECTS (for full-time students) or 36 ECTS (for partial-time students). If a student received bad results, the enrolment limits are reduced to 42 ECTS (for full-time students) or 18 ECTS (for partial-time students).

##### **-) the remediation and support for students who do not perform adequately;**

The **Tutorial Program** consists of the monitoring of those students who have sat more than 3 examining session in a subject. The Dean's Office, during the first weeks of every semester, sends the list of these candidate students to every Subject Coordinator. The Coordinator must present a 'Subjects Tutorial Plan' to the 'Committee for the Tutorial Action'; and must contact with these



students offering them the opportunity to participate in Tutorial Plan. In order to facilitate the writing of the Subject Tutorial Plan, the Committee has approved a non-mandatory template ([link](#)). The student must sign a commitment document for their inclusion in the program ([link](#)).

Every year, the results of the Tutorial Action Plan are presented to the Tutorial Action Committee for the continuing assessment of the program and subjects results. The Tutorial Action Plan is defined in the Key Procedure for Student Orientation ([PCC03](#)). The person responsible for the PCC03 is the Vice-Dean of Academic Planning and the Committee for the Tutorial Action.

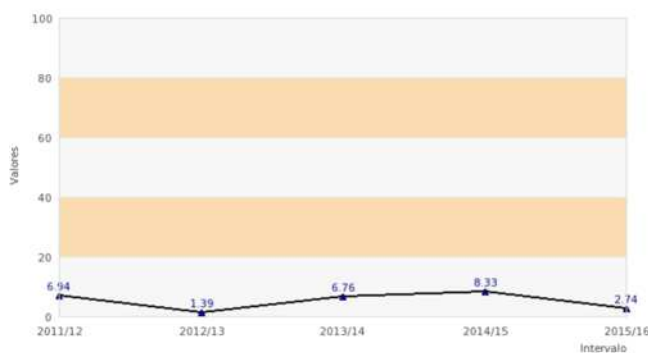


### -) the attrition rate and its main causes;

The drop-out rate is calculated using the following formulae:

$$\text{number of new students in year } X \text{ who are not enrolled in this degree in the courses } X + 1 \text{ and } X + 2 / N^{\circ} \text{ of new students} * 100$$

In the degree project presented to the ANECA the ULPGC committed to a drop-out rate lower than 15%. Our average drop-out rate, calculated over the last five years, is 5,23%. This information is public and can be found on the ULPGC Official Veterinary Degree Website ([link](#)). The main cause is financial, corresponding to the need to work full time to cover family expenses, despite the possibility of studying part-time.



During the first weeks in the first year of studies the main cause of drop-out is due to admission in other degrees (no precise data is available). These cases are not included in the drop-out rate formulae because another student is automatically nominated to enrol by the ULPGC admission office.

### -) the exclusion and appeal procedures;

The student has the opportunity of applying for an additional extension, the 'prórroga adicional'; but only once during their degree, as explained above. When in disagreement with decisions made by the Permanence Committee, student may appeal to the Social Council within a period of one month to count from the day counting from the following the communication of the decision, as established by law 30/1992 from 26 November of the Legal Regime of Public Administrations and Common Administrative Procedure.

### -) the advertisement to students and transparency of these criteria/procedures

The rules for academic progress and permanence in the ULPGC are explained on the first day of the first year during the general presentation to the students called the 'Jornada de Acogida'. The procedure is also published on the Social Council Website ([link](#)); which is the body responsible for its application. In addition, these rules are published on the Faculty Website and also on the ULPGC one. Every student has their personal records on the MiULPGC Website (i.e. the number of examining sessions they have sat per subject).

### **7.1.6. Description of the services available for students (i.e. registration, teaching administration, mentoring and tutoring, careers advice, listening and counselling, assistance in case of illness, impairment and disability, clubs and organisations, etc.).**

The ULPGC has implemented a welcome day called the '*Jornada de Acogida*' for new incoming students (first-year students and exchange students). During this first day, students are informed about the organization of the ULPGC and the Faculty (teaching activities, schedule, biosecurity rules, etc.) as described below:

The Dean welcomes the Students, presents the Faculty Governing Body and describe how the ULPGC and Faculty is organized, at the same time encouraging students to participate in all organized activities. Also, the most relevant ULPGC regulations for students are presented, such as the ULPGC Learning Assessment Regulation, and the Academic Progress and Permanence Regulations.

Secondly, the Vice-Dean of Academic Affairs presents the academic organization of the Faculty, the timetable and the 'Academic' software used for the planning of the teaching activities, the use of the online learning platform (based on Moodle), and the subject teaching plans (syllabi).

In addition, the Chief Librarian informs about the training requirement for the use of the Library, as mentioned in 6.1.6.

The Building Administrator informs about the administrative procedures, necessary documentation and the deadlines for the main procedures, such as fee payments, registration documents, grants, and other services.

The Vice-Dean of Quality Assurance is responsible for the communicating to the students the General Behaviour and Biosecurity Rules of the Faculty. For this purpose, during the first days of the academic year a small presentation is completed in every academic year for each subject (1<sup>st</sup>, 2<sup>nd</sup>, 3<sup>rd</sup>, 4<sup>th</sup> and 5<sup>th</sup>).

On the scheduled first day of every subject, the Coordinator and the rest of the Academic Staff presents the subject to the students. In particular, the presentation is focused on the subject description and its main objectives, the learning content (topics), the learning activities, the methods and criteria for the assessment of the learning outcomes, the bibliography and the learning resources; this includes e-learning activities, and the specific rules for biosecurity in the labs or other facilities. The specific requirements for attendance in the theoretical, practical, tutorials and/or evaluation activities are also described. For every subject, all the information must be written in the 'teaching plans', as described in the Regulation for the Academic Planning.

The Faculty Veterinary Medicine in its policy of 'providing training aimed at excellence ensuring an academic program in line with the needs and expectations of our users' offers either directly, or through the central services of the ULPGC, the following services for the students:

- Student Orientation Service
- Lockers Service
- Scrubs Loan Service
- Stethoscope Loan Service
- eBook Readers and Laptops Loan Service
- Library Group-Work Study Rooms Service
- Support for Students with Disabilities
- Risk Prevention Service
- Scholarships and Financial Aid Service

- Accommodation Service
- Service of the Mediation, Resolution of Conflicts, Intervention and Family Preservation
- Sports Service

The complete detailed management, requisites and rules for these Student Services are published on the Veterinary Faculty Website ([link](#)).

The ULPGC has centrally managed several services for all the University Community such as student counselling ([link](#)), attention to students with specific needs for educational support ([link](#)), the psycho-pedagogical support office ([link](#)), and volunteering and solidarity opportunities ([link](#)), among others as previously mentioned for disabled and infirm students.

As described in Chapter 3.1.8 the Faculty has a QAS procedure ([PAC06](#)) related to student complaints for the management of academic incidents that can be submitted anonymously if so wished. The University Community Defender ([link](#)) is an ULPGC official body responsible for the mediation, particularly in the non-solved problems including not only academic incidents, but also interpersonal conflicts, harassments, etc.



### **7.1.7. Prospected number of new students admitted by the Establishment for the next 3 academic years**

72 students per year.

### **7.1.8. Description of how and by who the admission procedures, the admission criteria, the number of admitted students and the services to students are decided, communicated to staff, students and stakeholders, implemented, assessed and revised**

As described previously the admission procedure is an institutional QAS Procedure ([PI10](#)) which is common to all the ULPGC Degree programmes. The person responsible for this procedure QAS procedure (PI10) is the Vice-Rector of Students and is managed by the centralized Service of Academic Managing.



Legal requirements are defined by law and established by the Ministry of Science, Innovation and Universities (formerly the Ministry of Education) and by the Canary Island Government. Therefore, these requirements are not approved directly by the Veterinary Faculty Administration, and neither by the ULPGC.

The number of admitted applicants is based on the official document (VERIFICA/MODIFICA) approved by the ANECA for the Degree in Veterinary Medicine; it is evaluated and approved by the Faculty Board, and other University Bodies.



**Table 7.1.1. Number of new veterinary students admitted by the Establishment**

Type of students	2017-2018	2016-2017	2015-2016	Mean
Granted	43	38	44	<b>42</b>
Standard	29	34	28	<b>30.3</b>
Full fee (not applied)	-	-	-	-
Total	<b>72</b>	<b>72</b>	<b>72</b>	<b>72</b>

**Table 7.1.2. Number of veterinary undergraduate students registered at the Establishment**

Year of programme	2017-2018 (Male/Female)	2016-2017 (Male/Female)	2015-2016 (Male/Female)	Mean (Male/Female)
First year	<b>66</b> (19 / 47)	<b>72</b> (21/51)	<b>70</b> (25/45)	<b>69.3</b>
Second year	<b>78</b> (23 / 55)	<b>80</b> (30/50)	<b>84</b> (19/65)	<b>80.6</b>
Third year	<b>83</b> (33 / 50)	<b>73</b> (15/58)	<b>75</b> (23/52)	<b>77.0</b>
Fourth year	<b>68</b> (13 / 55)	<b>65</b> (21/44)	<b>79</b> (23/56)	<b>70.6</b>
Fifth year*	<b>133</b> (42 / 91)	<b>145</b> (36/109)	<b>110</b> (24/86)	<b>129.3</b>
<b>Total</b>	<b>428</b> (130 / 298) (30% / 70%)	<b>435</b> (123/312) (28% / 72 %)	<b>418</b> (114/304) (27% / 73%)	<b>427</b> (122,3/304,6) (28.6% / 71.4%)

\* If a student is registered in any of the subject of 5<sup>th</sup> year, se/she is an student of the 5<sup>th</sup> year.

**Table 7.1.3. Number of veterinary students graduating annually**

Type of students	2017-2018	2016-2017	2015-2016	Mean
Standard students	<b>71</b>	<b>69</b>	<b>48</b>	<b>62.6</b>
Full fee students	<b>0</b>	<b>0</b>	<b>0</b>	<b>0</b>
Total	<b>71</b>	<b>69</b>	<b>48</b>	<b>62.6</b>

**Table 7.1.4. Average duration of veterinary studies**

Duration (Year of start)	N° students graduated in 2017-2018	
<b>5 years (2013-2014)</b>	<b>26</b> (36.6%)	<b>48</b> (67.6%)*
<b>6 years (2012-2013)</b>	<b>22</b> (30.9%)	
<b>7 years (2011-2012)</b>	<b>10</b> (14.1%)	
<b>8 years or more (2010-2011 and before)</b>	<b>13**</b> (18.3%)	
<b>TOTAL</b>	<b>71</b> (100%)	

\* the compromised result with ANECA is more than 50% in 6 years.

\*\* This result includes students from the previous study plan with no progression and permanence rules were included.

**Table 7.1.5. Number of postgraduate students registered at the Establishment**

<b>Programmes</b>	<b>2017-2018</b>	<b>2016-2017</b>	<b>2015-2016</b>	<b>Mean</b>
Interns	8	8	8	8
Residents	-	-	-	-
<b>PhD students</b>	<b>2017-2018</b>	<b>2016-2017</b>	<b>2015-2016</b>	<b>Mean</b>
6014 – Applied Research in Health Sciences	39	58	61	52.6
6020 – Animal Health and Food Safety	31	21	12	21.3
6023 - Sustainable Aquaculture and Marine Ecosystems	24	19	11	18
6025 – Research in Biomedicine	86	69	36	63.6
<b>Master Students</b>	<b>2017-2018</b>	<b>2016-2017</b>	<b>2015-2016</b>	<b>Mean</b>
5010 - Master Degree in Veterinary Clinic and Therapeutic Research	17	9	9	11.6
5013 - Master Degree in Marine Farming	-	14	9	11.5
5020 - Master Degree in Animal Health and Food Safety	24	15	14	17.6

\* The PhD programs and Master Degree depend on ULPGC. The detailed postgraduate degree in the table are those with members of the Academic Staff from the FV-ULPGC.

## 7.2. Comments

Student admission procedure are centralized by the ULPGC and regulated by law. The Faculty of Veterinary Medicine cannot change this regulation in order to include a specific test for a better selection. However, the number of applicants has been high over the last 7 years: there is a mean of 641 students (1<sup>st</sup> and 2<sup>nd</sup> option in order of choice) or 1,138 students if all the options in the order of preferences (maximum -12 degrees-) is included. Therefore, only the best students are admitted to our Faculty, with an average of 11,2% of the applicants (1<sup>st</sup> and 2<sup>nd</sup> option) or 6,3% (all options). Due to this, the program for the promotion of the Degree and the recruitment of students is limited. These data are analysed in the Annual Faculty Report drawn up in accordance with QAS [PAC08](#) related to the Analysis of the Results and Accountability.



The number of students might be considered adequate for the available animal and material resources .

The regulation for academic progress and permanence, approved by the Social Council, includes the consumption of available examining sessions for one subject, even when the student does not sit the examination ('no-shows'). The Faculty of Veterinary Medicine considers that this regulation is very restrictive and the number of examining sessions is increased artificially. A survey has evidenced that 88 students have more than 5 consumed examining sessions and must be included in the Tutorial Action Plan. Nevertheless, 52 of those students have fewer than 2 failed sessions.

During the academic year 2018-2019, the Master's Degree in Veterinary Clinic and Therapeutic Research was not offered. This decision was mainly motivated by the reduction in the number of students. The limited student demand is presumably motivated by the competition from overseas Master's Degrees and also, the VTH Internship program, which is very intensive and time consuming. Therefore, as part of the QAS and the policy of the Canary Islands Government (establishing a minimum of 15 students over 2 consecutive years), the Faculty decided to stop running this Master's Degree and redesign a new Master's Degree related to clinical activity.

In relation to the PhD programs offered by the ULPGC and centralized in the [Doctorate School](#), mostly shared with the Faculty of Human Medicine and several Research Institutes, the Veterinary Faculty considers that there is an appropriate offer and the offer of new PhD programs is not foreseen in the next future.

### **7.3. Suggestions for improvement**

During the academic year 2018-2019, the Committee for the Master's Degree in Veterinary Clinic and Therapeutic Research will study a redefinition of the Master's in order to redesign and renew the postgraduate program. A thorough study will be completed, un particular a survey to be administered to all stakeholders: students, graduates and professionals will be included.

The Social Council should eliminate consumed examining sessions in cases of students not attending to final exams, as happens in other state-run Spanish Universities (i.e. the University of La Laguna, also located in the Canary Islands). This proposal has been put forward several times.

A rational approach towards veterinary education in relation to the requirements of the veterinary profession and society in general is also needed. A control system for student admission in all Spanish Faculties of Veterinary Medicine based on a critical analysis would be desirable. However, the ruling body is spread over the different Educational Authorities in the Autonomous Communities in Spain.